

Karen Trelfa
www.stampersclub.com
karen@stampersclub.com

Love of Leaves



S tampers Club Love of Leaves
Step-by-Step Turtorial

Supplies needed:



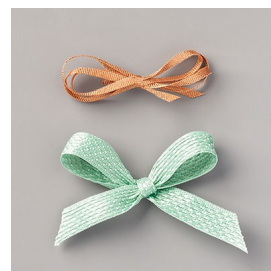
[Love Of Leaves Bundle
\(English\)
\[155195\]](#)



[Acorn Trinkets
\[153552\]](#)



[In Good Taste Elements
\[152476\]](#)



[Basket Weave & Metallic
Ribbon Combo Pack
\[153553\]](#)



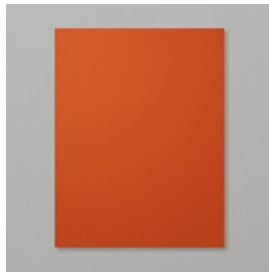
[Gilded Autumn Specialty
Designer Series Paper
\[153520\]](#)



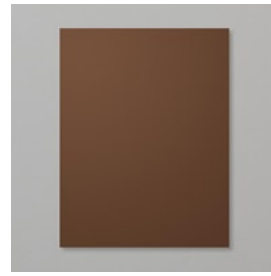
[Brushed Metallic Cardstock](#)
[153524]



[Very Vanilla 8-1/2" X 11" Thick Cardstock](#)
[144237]



[Cajun Craze 8-1/2" X 11" Cardstock](#)
[119684]



[Early Espresso 8-1/2" X 11" Cardstock](#)
[119686]



[Early Espresso Classic Stampin' Pad](#)
[147114]



[Stampin' Cut & Emboss Machine](#)
[149653]



[Stampin' Seal](#)
[152813]



[Stampin' Dimensionals](#)
[104430]

Project Recipe:

1. Start with a 5 1/2" x 8 1/2" piece of extra thick very vanilla cardstock
2. Stamp greeting in lower right hand corner using Early Espresso Ink
3. Add a 5 1/8" x 2 1/2" piece of Mint Macaroon cardstock near left edge
4. Layer on a piece of 2" x 5" piece of Designer Paper from the Autumn Gilded Specialty Paper
5. Diecut second largest circle from the Stitched Shapes Dies from the medium color of Brushed Metallic Cardstock, add to card using dimensionals
6. Die cut the following leaves from the Stitched Leaves Dies:
 - 1 - Large leaf from Autumn Gilded DSP
 - 1 - Medium leaf from Early Espresso cardstock
 - 1 - Small leaf from Cajun Craze cardstock
7. Attach the largest leaf with a dimensional which is placed in the center of the leaf
8. Attach the remaining two leaves with Stampin' Seal
9. Add wooden In Good Taste Element using a Glue Dot
10. Thread a 12" piece of the copper ribbon thru an Acorn Embellishment, tie a bow, add to card using a glue dot